

第三单元 10以内的加减法

3.4 被减数是6、7 的减法



学习目标

1. 初步掌握被减数是6、7的减法计算方法，能正确计算被减数是6、7的减法算式。
2. 使学生从具体情境中理解根据一幅图可以列出两道减法算式，体会两道减法算式之间的联系。
3. 感受数学与生活的联系，进一步增强学习数学的兴趣。



复习导入

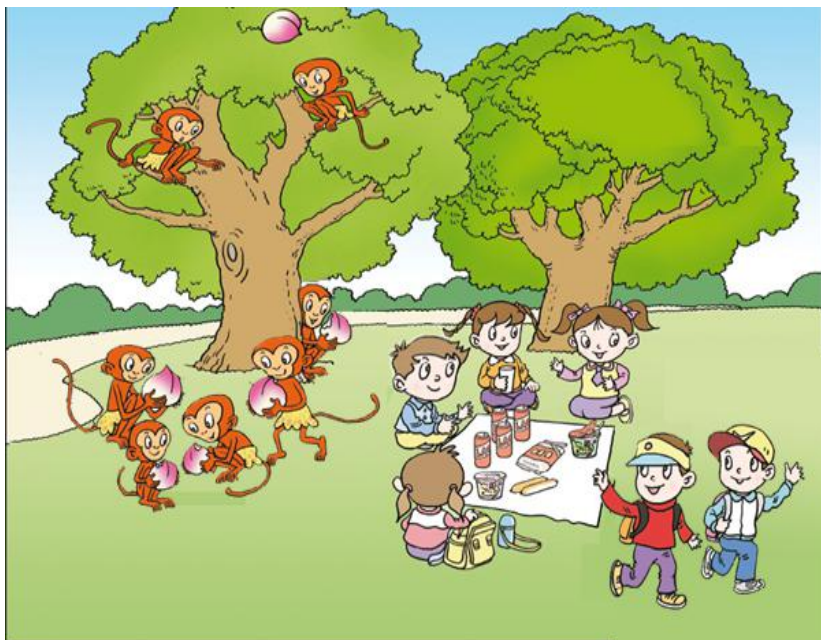
看图列算式。



$$5 - 4 = 1 \text{ (只)}$$

情景导入

从图中你知道了哪
些数学信息？



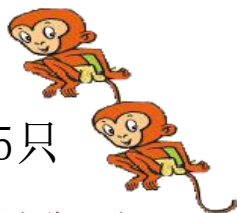
根据这些信息，你能提
出什么数学问题？

探索新知

树上有6个
摘了5个
还剩几个桃子？



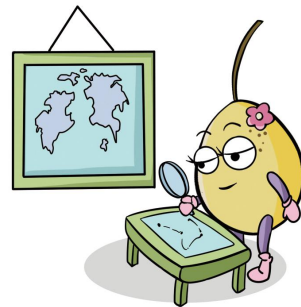
树上有7只
从树上跳下5只
树上还剩几只猴子？



有6个同学
走了2个同学
还剩几个同学？



探索新知



还剩几个同学？

$$6 - 2 = \square$$

(个) 走了2个同学

有6个同学

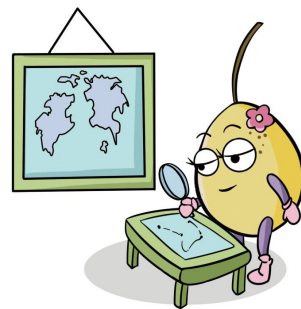
探索新知

还剩几个同学？

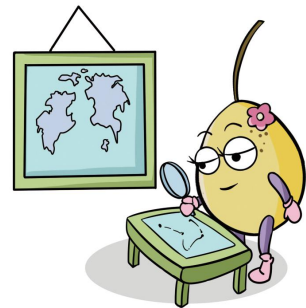
$$6 - 2 = \square \quad (\text{个})$$



5, 4

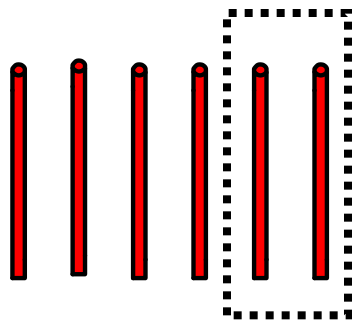


探索新知



还剩几个同学？

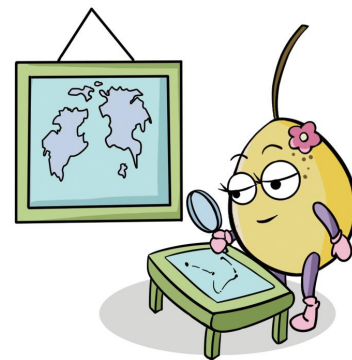
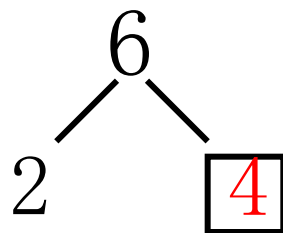
$$6 - 2 = \square \quad (\text{个})$$



探索新知

还剩几个同学？

$$6 - 2 = \square \quad (\text{个})$$



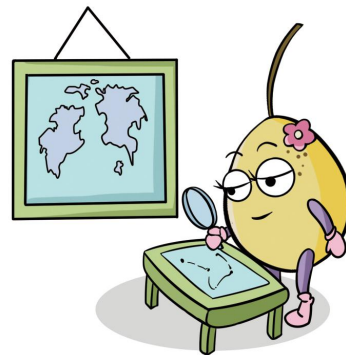
探索新知

还剩几个同学？

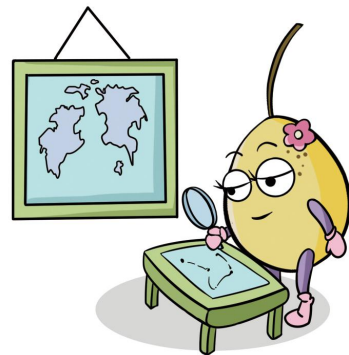
$$6 - 2 = \square \quad (\text{个})$$

$$4 + 2 = 6$$


$$- =$$



探索新知



树上还剩几只  ?

树上有7只 

从树上跳下5只 

$$7 - 5 = \square \quad (\text{只})$$

探索新知

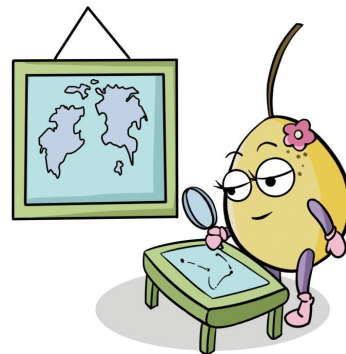
树上还剩几
只 ?



$$7 - 5 = \square \text{ (只)}$$



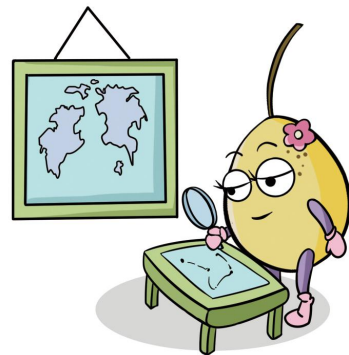
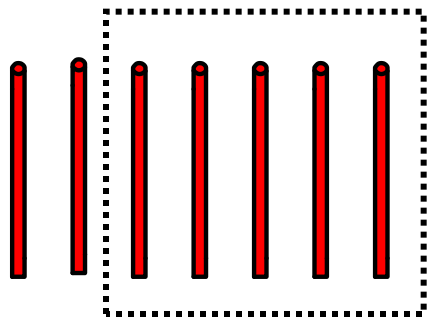
6, 5, 4, 3, 2



探索新知

树上还剩几只  ?

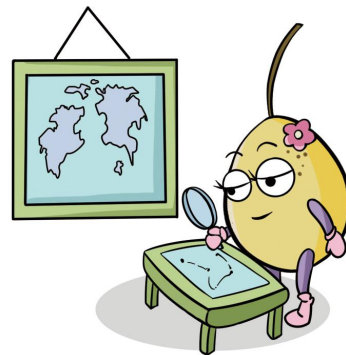
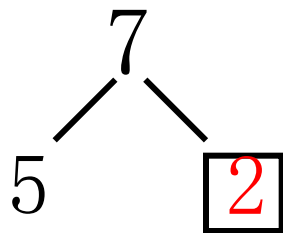
$$7 - 5 = \square \quad (\text{只})$$



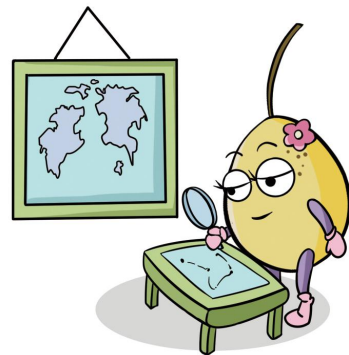
探索新知

树上还剩几只  ?

$$7 - 5 = \square \text{ (只)}$$



探索新知

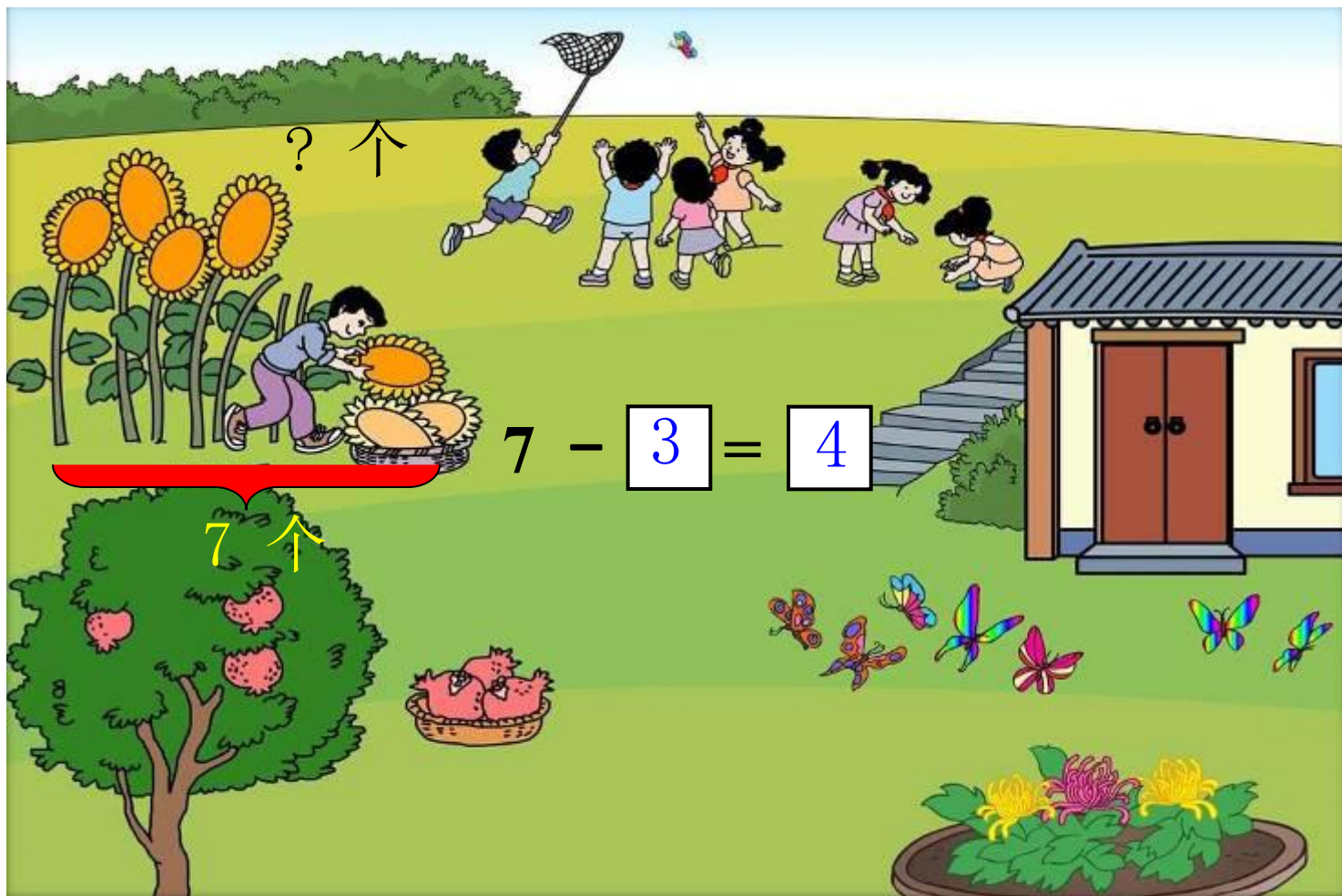


树上有6个🍑，摘了5个🍑。还剩几个🍑？

$$6-5=1 \text{ (个)}$$

典题精讲

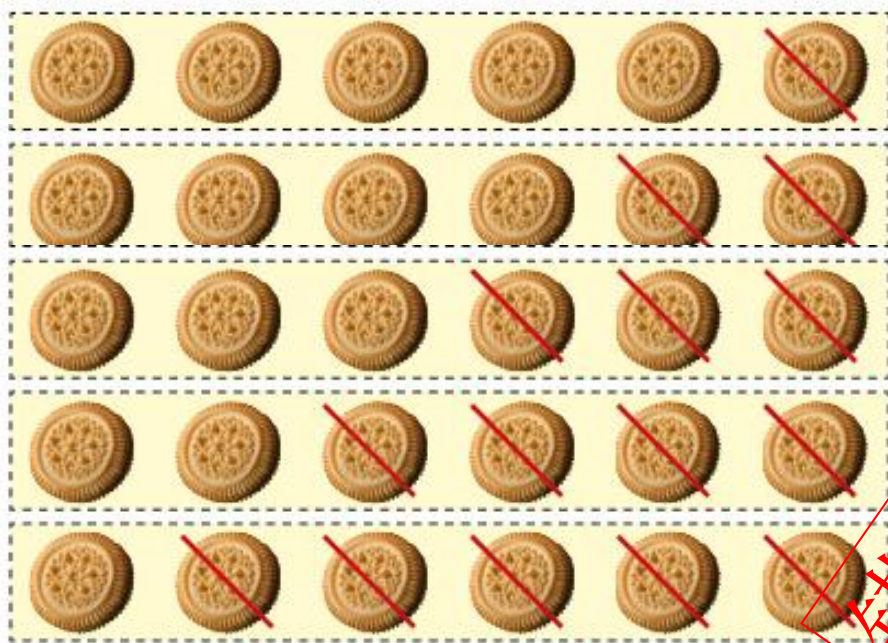
例



易错提醒

例

看图写算式。



$$6 - 1 = 5$$

$$6 - \boxed{2} = \boxed{4}$$

$$6 - \boxed{3} = \boxed{3}$$

$$\boxed{6} - \boxed{4} = \boxed{3}$$

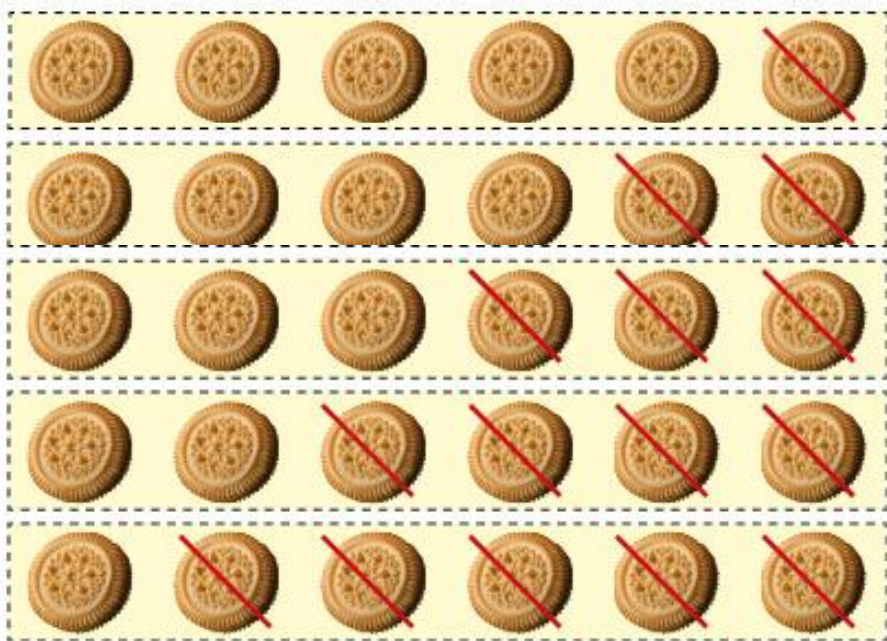
$$\boxed{6} - \boxed{5} = \boxed{1}$$

错误解答

易错提醒

错误分析：

6-2计算错误。



$$6 - 1 = 5$$

$$6 - 2 = 4$$

$$6 - 3 = 3$$

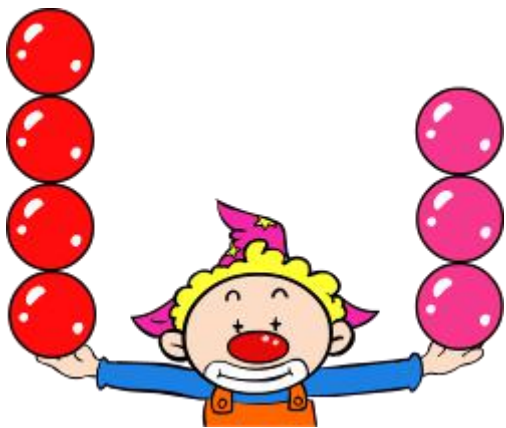
$$6 - 4 = 2$$

$$6 - 5 = 1$$

正确解答

学以致用

1.



$$4 + \boxed{3} \quad \boxed{7} =$$

$$\boxed{3} + \boxed{4} \quad \boxed{7}$$



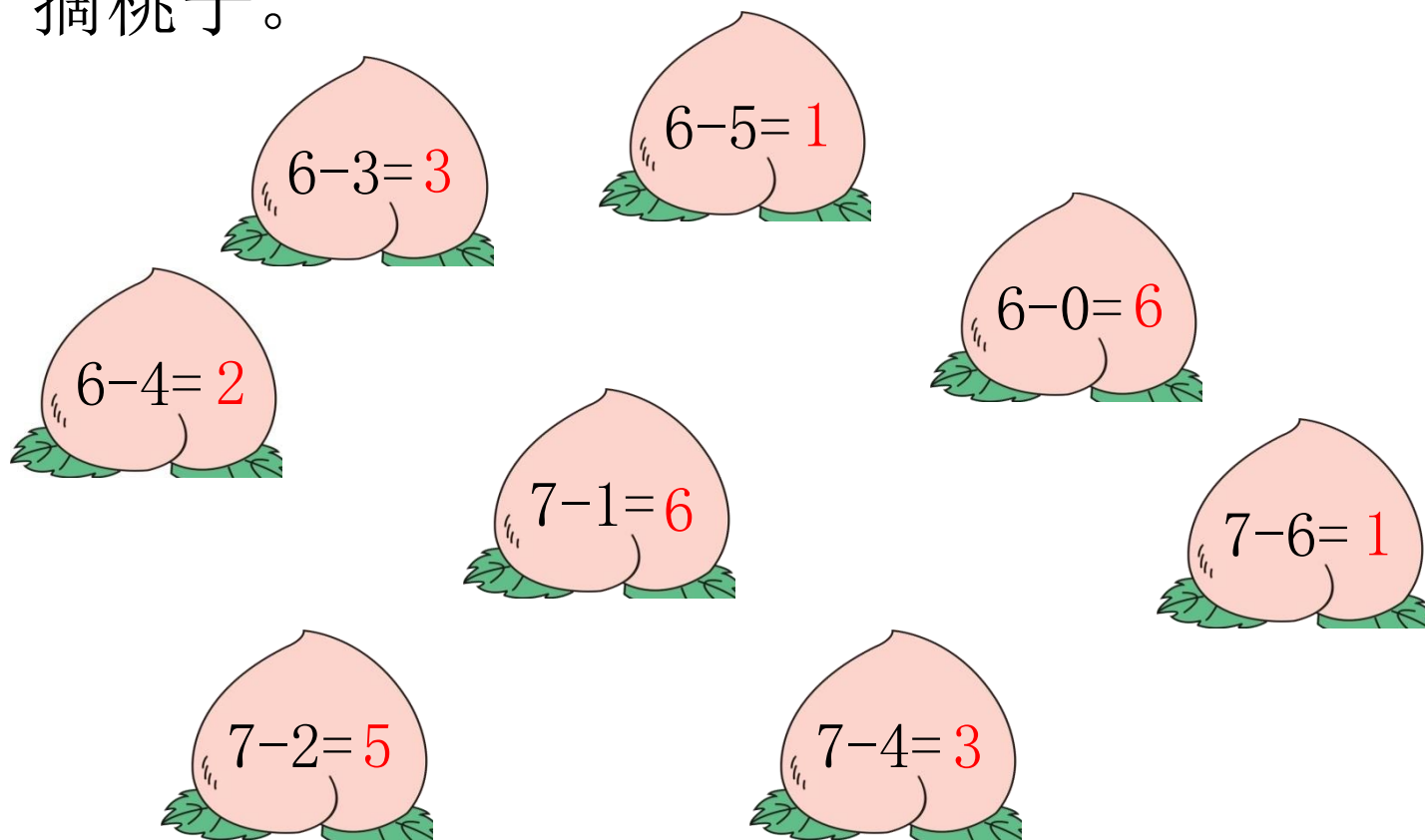
$$7 - \boxed{2} \quad \boxed{5}$$

$$\boxed{7} - \boxed{5} \quad \boxed{2}$$



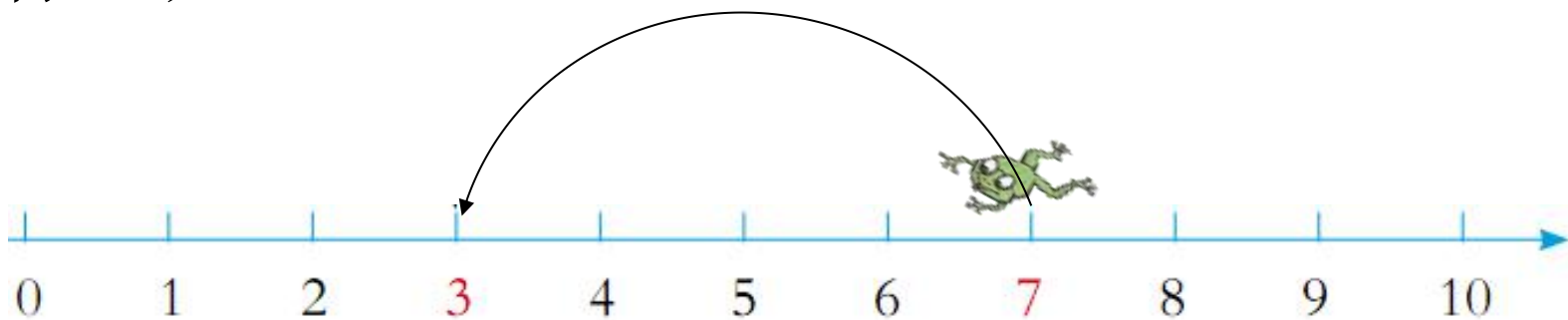
学以致用

2. 摘桃子。



学以致用

3. 青蛙跳远。



$$7 - 4 = 3$$

学以致用

4. 把得数是5的  圈起来。

 $6-2$

 $6+0$

 $5-0$

 $2+3$

 $3+4$

 $7-2$

 $6-6$

 $7-6$

学以致用

5.



? 只

$$4 + \boxed{2} = \boxed{6}$$

? 只



7 只

$$7 - \boxed{1} = \boxed{6}$$

课堂小结

这节课有什么收获？



利用“一图两式”理解被减数是6、7的减法意义。

减法是加法的逆运算。