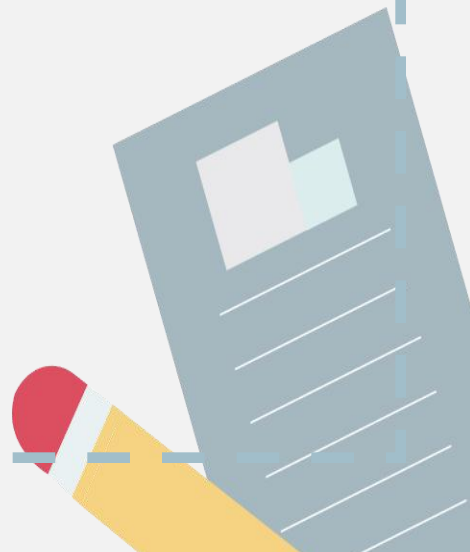




## Unit 3

Could you please tell me where the restrooms are?

第一课时 Section A (1a—2d)





## 夯基固本

一、从方框中选出合适的词,并用其适当形式填空。

*stamp, postcard, beside, rush, pardon*

1. I'd like to buy an envelope and some \_\_\_\_\_ because I need to post a letter.
2. She received many \_\_\_\_\_ on Christmas.
3. You don't need to \_\_\_\_\_. We have enough time to get there.
4. There are some tall buildings \_\_\_\_\_ our house.
5. I beg your \_\_\_\_\_. I can't hear you clearly.

## 二、单项选择。

- (      ) 1. Go \_\_\_\_\_ this street, you'll find the bank is \_\_\_\_\_ your left.
- A. to; in  
B. along; on  
C. along; in  
D. to; on
- (      ) 2. There's a store \_\_\_\_\_ the school \_\_\_\_\_ the bank.
- A. both; and  
B. not only; but also  
C. next; to  
D. between; and
- (      ) 3. — \_\_\_\_\_ is it from your home to school?  
—It's about 10 kilometers.
- A. How far  
B. How long  
C. How soon  
D. How often

(     )4. —Do you know \_\_\_\_\_ to our school?  
—Next term.

A. when the exchange students came

B. when did the exchange students come

C. when the exchange students will come

D. when will the exchange students come

(     )5. (宜昌市中考)—Can you guess \_\_\_\_\_?  
—The south. She prefers rice to noodles.

A. how old she is

B. what she does

C. where she's from

D. who she is

(     )6. —Go along the street, and



you can see a bank on your left.

— \_\_\_\_\_? Could you speak a little more slowly?

A. Is that OK

B. Are you joking

C. Do you think so

D. Pardon me

### 三、用所给单词的适当形式填空。

1. I don't know what \_\_\_\_\_ (do) next.

2. There is a book store on the \_\_\_\_\_ (three) floor.

3. It's warm today. You don't need \_\_\_\_\_ (wear) such thick clothes.

4. People rush \_\_\_\_\_ (buy) dumplings at Spring Festival.

5. \_\_\_\_\_ (go) past the clothes store and \_\_\_\_\_  
(turn) right.



## 拓展提能

四、补全对话。(其中有两项多余)

A: Excuse me, sir. 1. \_\_\_\_\_

B: Certainly. Go along this street. Turn left into Xingfu Street, and the museum is on your right.

A: 2. \_\_\_\_\_

B: It's about thirty minutes.

A: I see. 3. \_\_\_\_\_

B: Yes, you can. A No. 103 bus will take you there.

A: 4. \_\_\_\_\_

B: Over there. Look! The bus is coming.

A: Thank you very much.

B: 5. \_\_\_\_\_

A. *I will go to the History Museum.*

B. *You're welcome.*

C. *Can I take a bus?*

D. *How long will it take me to walk there?*

E. *That's such a pity!*

F. *Where is the bus stop?*

G. *Could you tell me the way to the History Museum?*