



六年级英语·上册·人教



# Unit 1 综合测试卷

(时间：60分钟 分数：100分)



## 听力部分(30分)



### 一、听录音,选择你所听到的单词。(10分)

- (     ) 1. A. far                      B. near                      C. next
- (     ) 2. A. post office                B. cinema                    C. hospital
- (     ) 3. A. read                        B. right                      C. left
- (     ) 4. A. feature                    B. follow                    C. from
- (     ) 5. A. crossing                    B. street                    C. straight





二、听录音,判断下列各句与所听内容是否相符,相符的打“√”,不相符的打“×”。(10分)

- (     ) 1. There is a post office in the city.
- (     ) 2. The post office is in front of the school.
- (     ) 3. The bookstore is next to the museum.
- (     ) 4. The hospital is near the school.
- (     ) 5. Go straight and you can see the museum.





### 三、给听到的问题找答语。(10分)

(     ) 1. A. Yes, there is.

B. Yes, it is.

(     ) 2. A. No, it's not far.

B. You're welcome.

(     ) 3. A. Take the No. 12 bus.

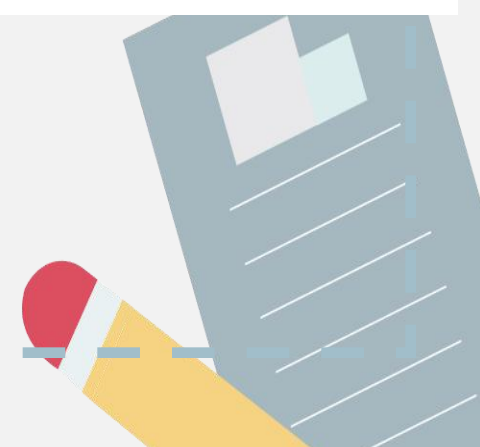
B. It's next to the cinema.

(     ) 4. A. It's behind the hospital.

B. Look for me near the door.

(     ) 5. A. I can get there.

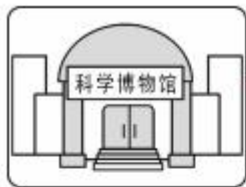
B. Turn left at the cinema.



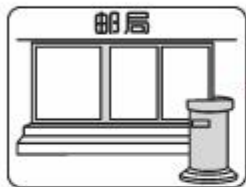
## 笔试部分(70分)

### 四、看图片,连单词或短语。(10分)

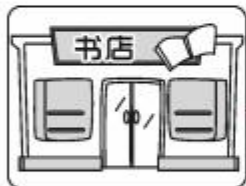
1.



2.



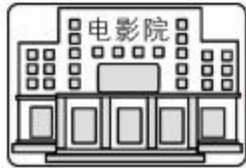
3.



4.



5.



A. post office

B. science museum

C. cinema

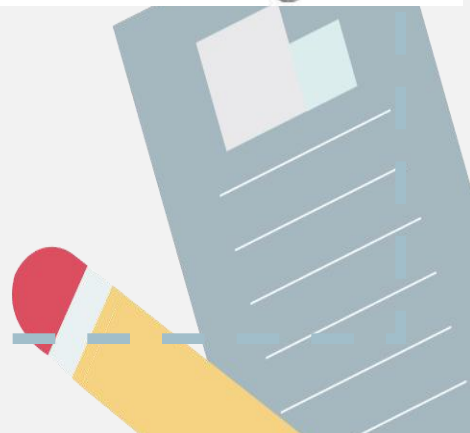
D. bookstore

E. hospital



五、选出不同类的一项。(10分)

- ( ) 1. A. cinema                      B. bookstore                      C. behind                      D. school
- ( ) 2. A. ask                              B. science                              C. watch                              D. follow
- ( ) 3. A. want                              B. what                              C. when                              D. how
- ( ) 4. A. buy                              B. right                              C. turn                              D. send
- ( ) 5. A. next to                              B. near                              C. in front of                              D. get



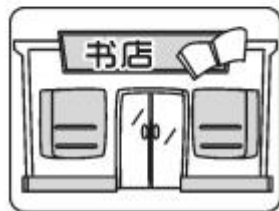
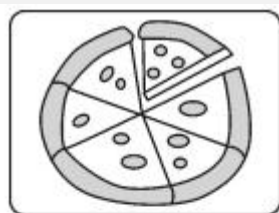


七、给下列图片选择正确的句子。(10分)

- ( ) 1. A. I like salad.  
B. I like pizza.

- ( ) 2. A. Is there a post office?  
B. Is there a museum shop?

- ( ) 3. A. Where's the cinema?  
B. Where's the bookstore?





( )4. A. How can I get to the hospital?

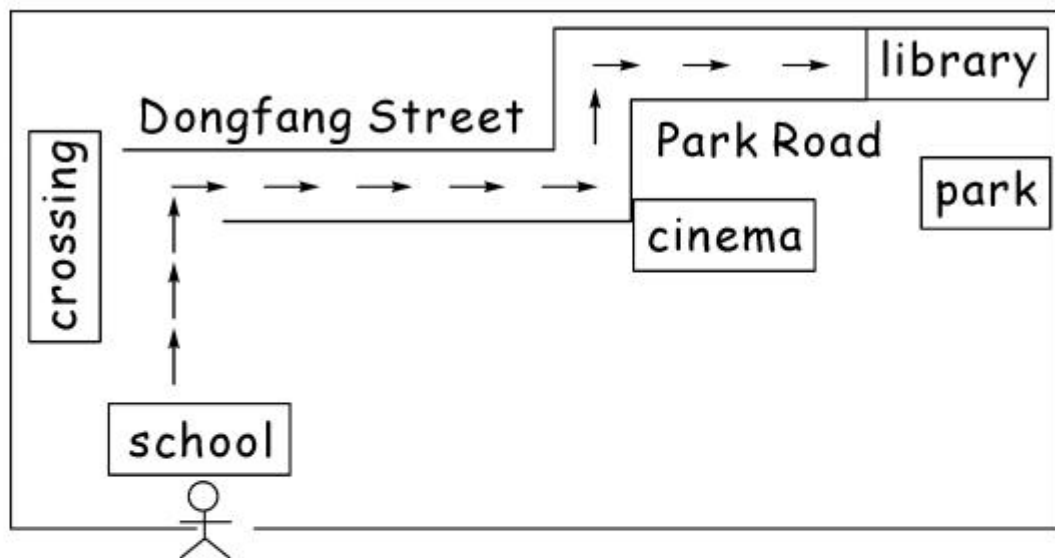
B. How can we get to the library?

( )5. A. Turn left.

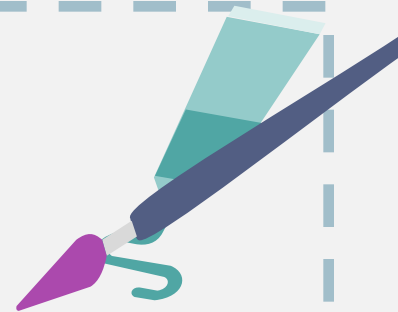
B. Turn right.



八、看图给下列句子排序,让 Amy 能顺利到达市图书馆。(10 分)



1. Then turn left at the cinema.
2. Go straight on Dongfang Street.
3. Walk out of the school and go straight.
4. Walk along the Park Road.



5. Turn right at the crossing.

6. You will see the library in front of you.

( 3 ) → (     ) → (     ) → (     ) → (     ) → (     )



## 九、连词成句。(10分)

1. can we get how there (?)

---

2. next it's the shop to (.)

---

3. interesting what an film (!)

---

4. a is pet in my there hospital city (.)

---

5. postcard want I buy to a (.)

---

十、阅读对话,判断句子对(√)错(×)。(10分)

Mr Black: Excuse me. I'm new here. How can I get to the museum?

Chen Jie: You can take the No. 13 bus.

Mr Black: Where is the bus stop?

Chen Jie: You go to the hospital. The bus stop is in front of the hospital.

Mr Black: Is it far?

Chen Jie: No, it's not far. Walk straight for two minutes, then you can see the hospital.

It's on your left.

Mr Black: Thank you.

Chen Jie: You're welcome.



- ( ) 1. Mr Black wants to go to the post office.
- ( ) 2. Mr black can go there by bus.
- ( ) 3. The hospital is in front of the bus stop.
- ( ) 4. The hospital is far from the bus stop.
- ( ) 5. Mr Black walks straight for two minutes, then he can see the hospital.

