







期末专题训练(一) 语音与词汇

一 判断下列单词画线部分读音是(√)否(×)相同。

() 1.  hate hat

() 2.  cut cute

() 3.  he we

() 4.  pig kite

() 5.  no not

二 读下面单词,选出画线部分读音不同的一项。

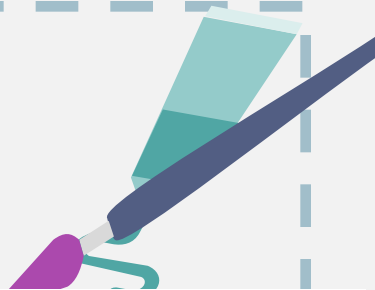
() 1. A. fan B. face C. name

() 2. A. Jones B. box C. note

() 3. A. nine B. big C. rice

() 4. A. she B. me C. egg

() 5. A. uncle B. duck C. use



三 按要求给下列单词分类,只写序号。

A. nurse

B. maths book

C. vegetable

D. bathroom

E. noodles

F. kitchen

G. soup

H. storybook

I. cook

J. notebook

K. driver

L. study

1.



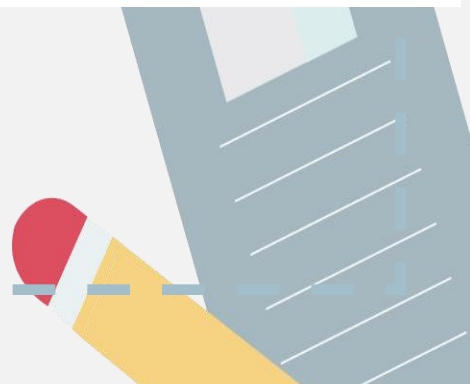
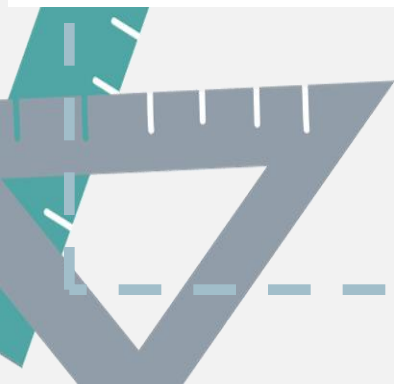
2.



3.



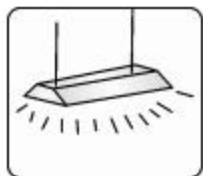
4.



四 判断下列图片与单词是(😊)否(😞)一致。



1.



blackboard



2.



schoolbag



3.



glasses



4.



nurse



5.



soup



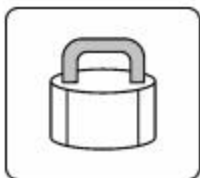
6.



computer



7.



key



8.



living room



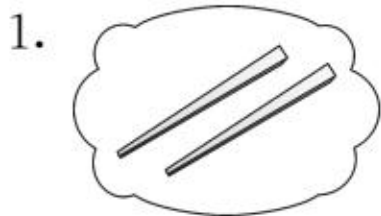
9.



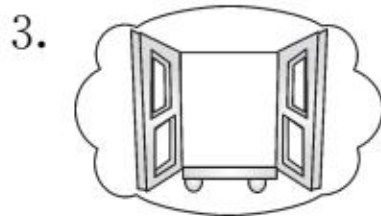
noodles

五 给图片选择正确的单词,并规范地抄写在相应的四线格中。

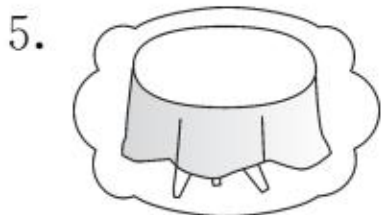
window candy hair bedroom table chopsticks chicken farmer





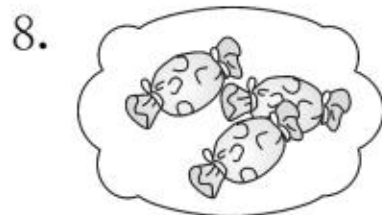








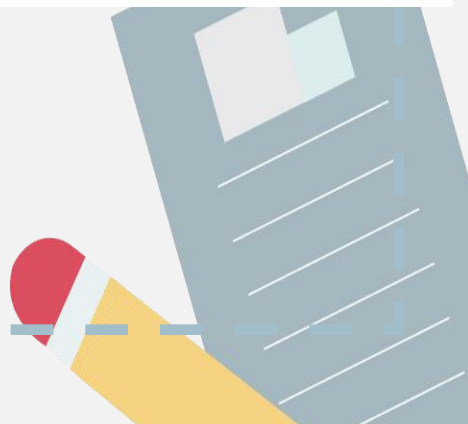






六 根据汉语意思选择单词。

- | | | | |
|-------------------|------------|--------------|------------|
| () 1. 父母 | A. family | B. father | C. parents |
| () 2. 安静的 | A. strong | B. quiet | C. cute |
| () 3. 同辈表(堂)亲 | A. aunt | B. uncle | C. cousin |
| () 4. 地板 | A. floor | B. door | C. fork |
| () 5. 蔬菜 | A. noodles | B. vegetable | C. soup |





七 找出不同类的单词,把序号写在前面的括号里。

() 1. A. light

B. classroom

C. wall

() 2. A. toy

B. English

C. maths

() 3. A. quiet

B. glasses

C. friendly

() 4. A. cook

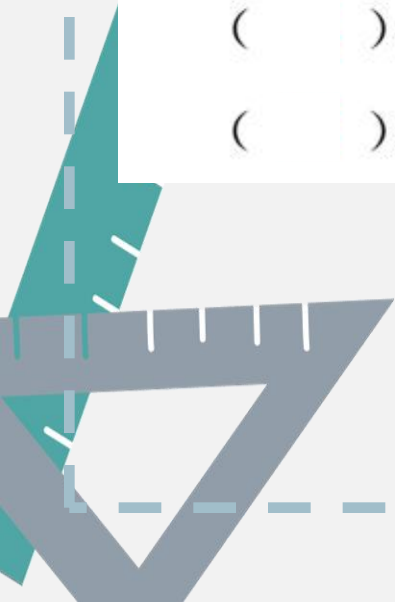
B. driver

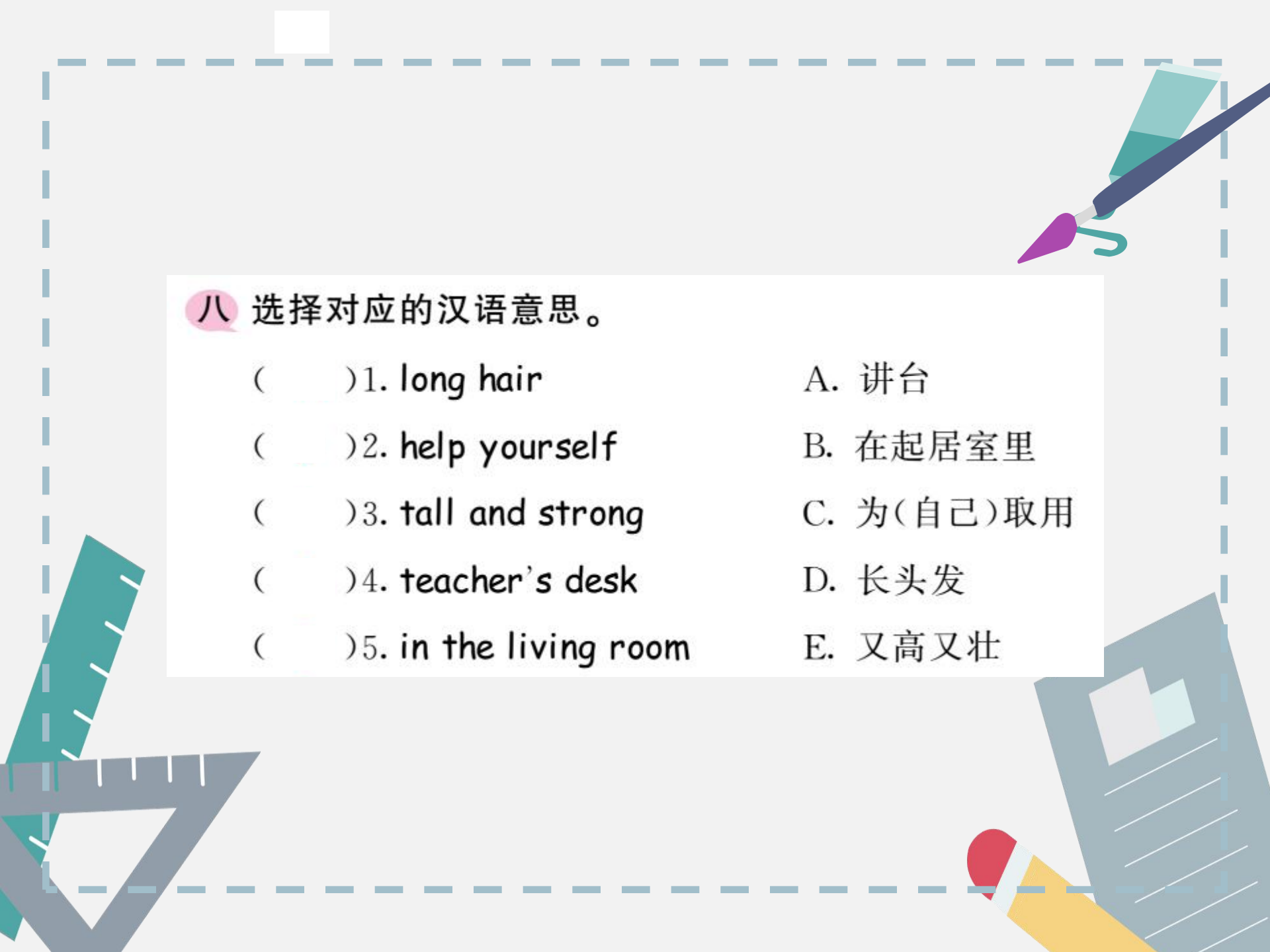
C. baby

() 5. A. noodles

B. rice

C. juice





八 选择对应的汉语意思。

() 1. long hair

() 2. help yourself

() 3. tall and strong

() 4. teacher's desk

() 5. in the living room

A. 讲台

B. 在起居室里

C. 为(自己)取用

D. 长头发

E. 又高又壮