



Part A 第三课时 Let's spell

一 判断下列每组单词中画线部分的发音是(√)否(×)一致。

() 1. $\begin{cases} \underline{u}se \\ cu\underline{t}e \end{cases}$

() 2. $\begin{cases} du\underline{c}k \\ excu\underline{s}e \end{cases}$

() 3. $\begin{cases} bu\underline{s} \\ cu\underline{t} \end{cases}$

() 4. $\begin{cases} stu\underline{d}y \\ compu\underline{t}er \end{cases}$

() 5. $\begin{cases} \underline{u}p \\ mu\underline{c}h \end{cases}$

() 6. $\begin{cases} stu\underline{d}ent \\ fu\underline{n} \end{cases}$

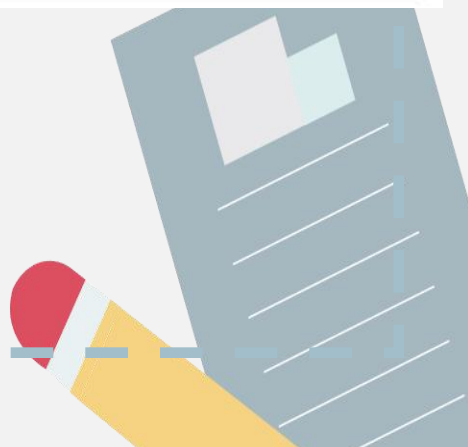


二 按单词中字母 u 的发音规律来进行分类。



1. cute _____

2. cut _____



三 看图,选词补全句子。

up, cute, duck, use, excuse

1.



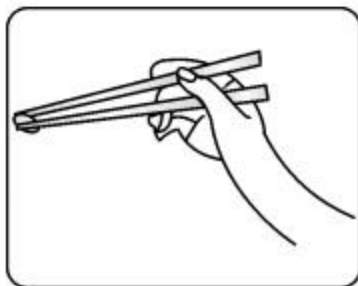
Stand _____, please.

2.



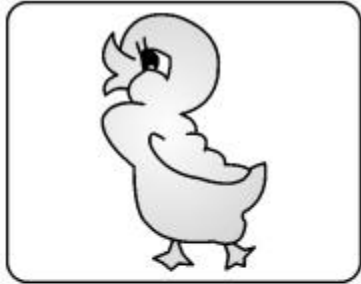
The panda is _____.

3.



I can _____ chopsticks(筷子).

4.



The _____ is big.

5.



_____ me. Where's Yucai School?