



Unit ① How can I get there?

Part A(I) Let's try Let's talk



一 把字母重组成单词补全句子。

1. It's _____ the library. (e, r, a, n)
2. What a great _____! (m, e, m, u, u, s)
3. _____ is the post office? (w, e, e, h, r)
4. The shop is _____ to the park. (e, x, n, t)
5. Today is Tuesday. We have _____. (c, s, i, e, e, c, n)



二 选择正确的答案。

() 1. — _____ is the shop?

— It's near the park.

A. When B. Where C. Who

() 2. I want _____ it.

A. to send B. sends C. send



()3. — Where is the museum?

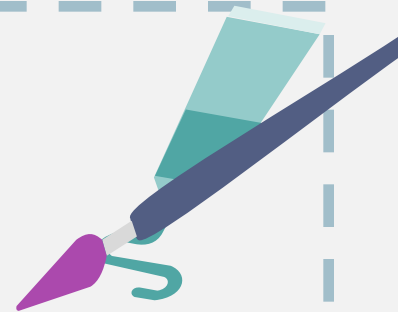
— It's _____ the zoo.

A. next B. next to C. behind to

()4. — I don't know the way.

— I _____ ask.

A. will B. am C. is



()5. — Is there a school near here?

— No, _____.

A. it isn't

B. there is

C. there isn't



三 看图,选词填空。

A. on

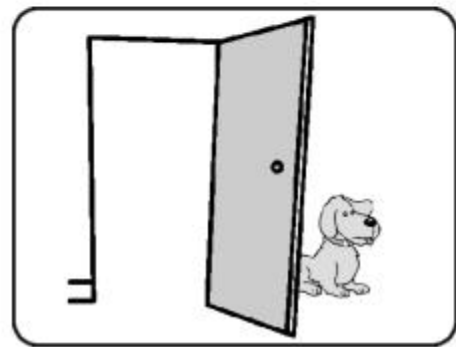
B. in

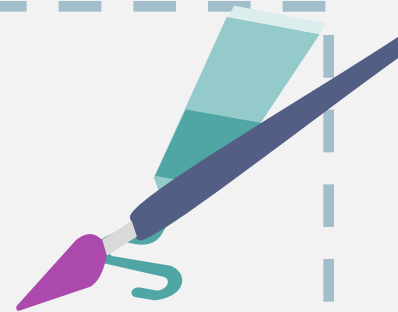
C. behind

D. next to

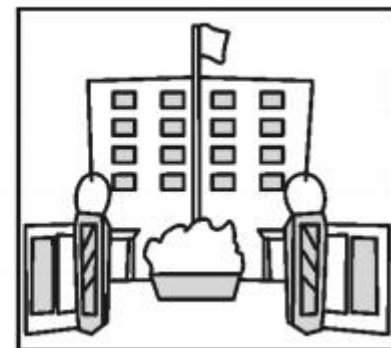
E. in front of

1. The dog is _____ the door.

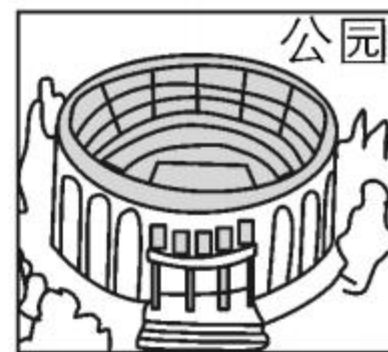
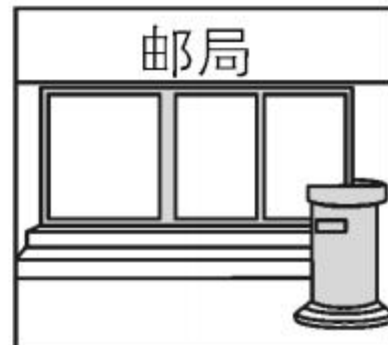




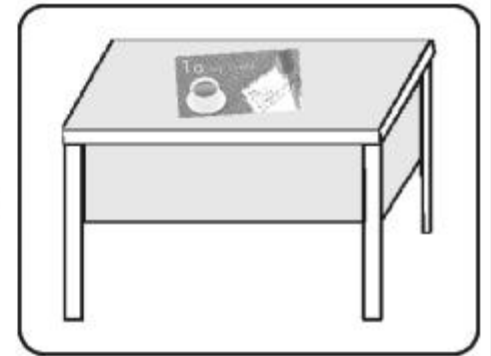
2. The library is _____
the school.



3. The park is _____ the post office.

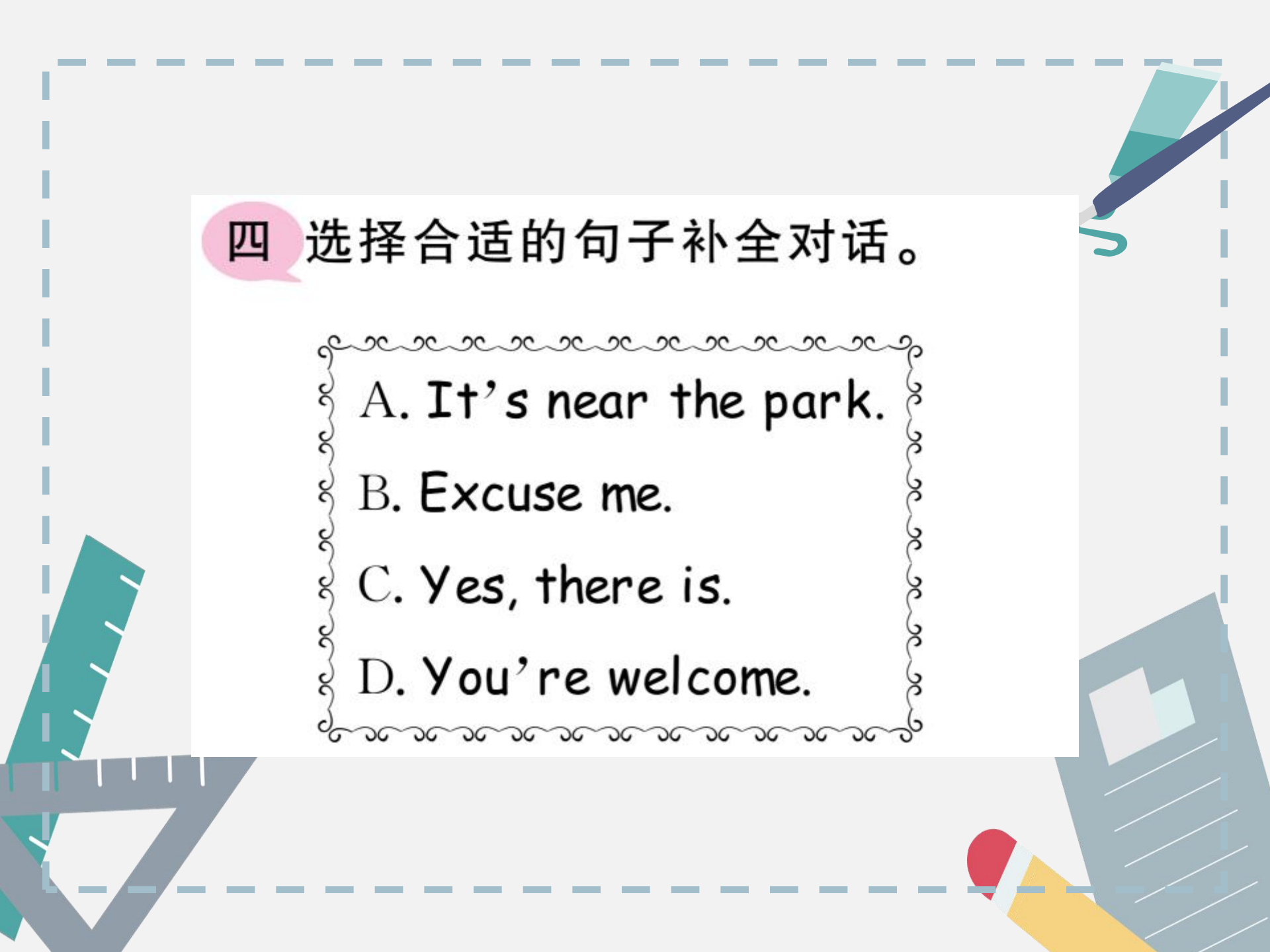


4. The postcard is _____ the desk.



5. The robot is _____ the toy box.





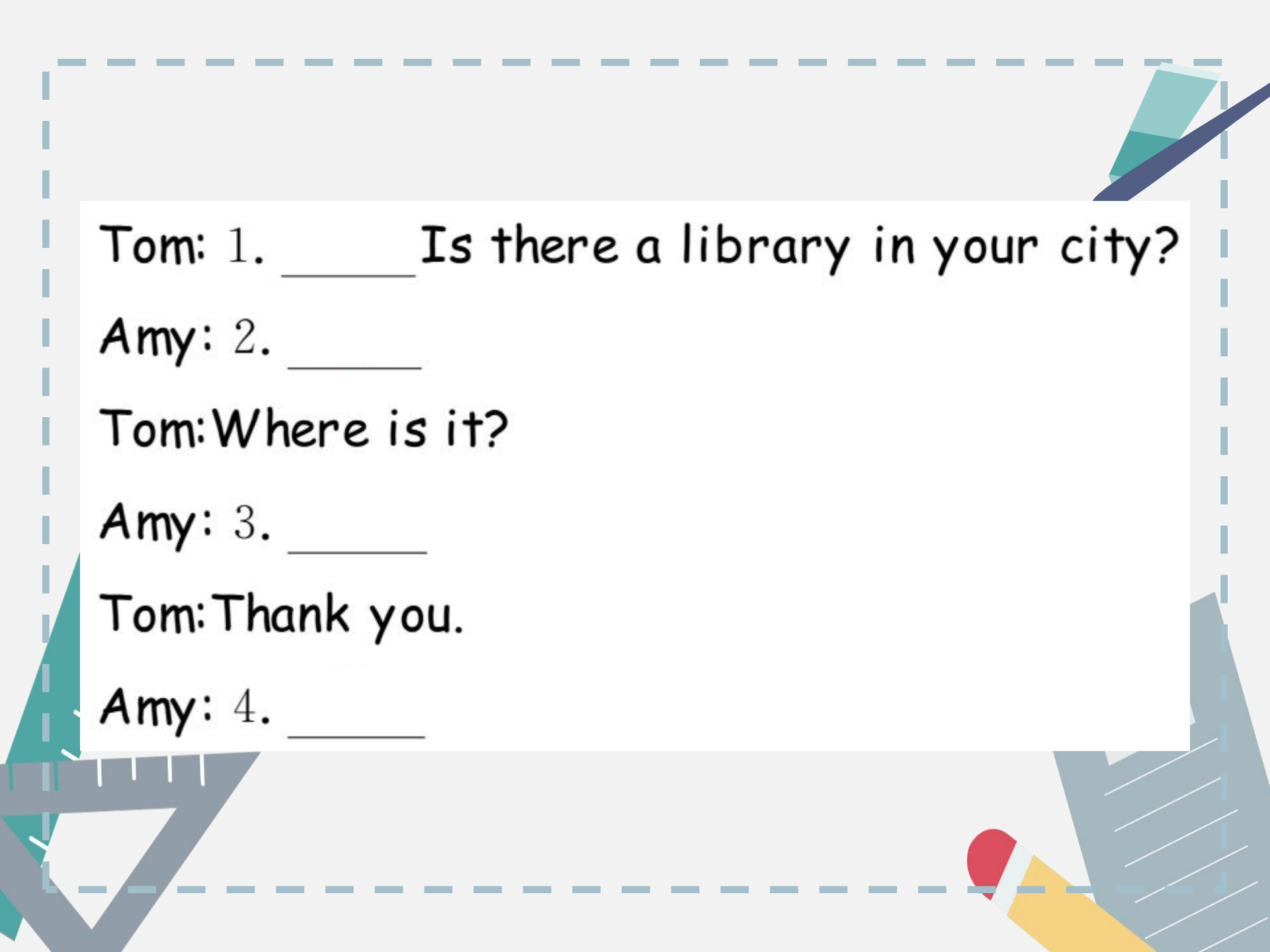
四 选择合适的句子补全对话。

A. It's near the park.

B. Excuse me.

C. Yes, there is.

D. You're welcome.



Tom: 1. _____ Is there a library in your city?

Amy: 2. _____

Tom: Where is it?

Amy: 3. _____

Tom: Thank you.

Amy: 4. _____



五 连词成句。

1. where the is library (?)

2. want buy I book to a (.)





3. near it the shop is museum (.)

4. Grandpa there is (?)

5. park great what a (!)
