



Part B 第三课时 Read and write

Let's check Let's sing





一 判断下列每组单词是(√)否(×)同类。

() 1. A. blackboard B. green C. picture

() 2. A. window B. computer C. fan

() 3. A. light B. computer C. fan

() 4. A. floor B. classroom C. many

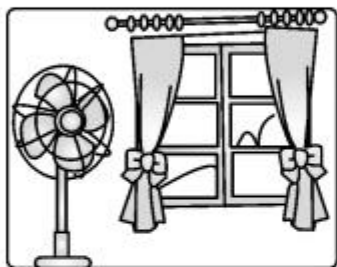
() 5. A. on B. near C. under



二 看图,选词或短语填空。

computer window picture
door teacher's desk

1.



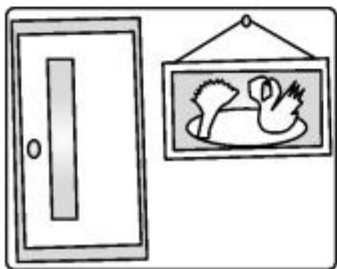
The fan is near the _____.

2.

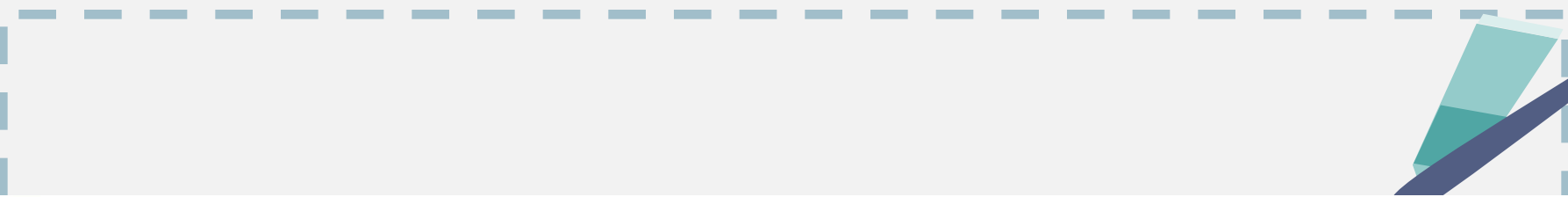


The _____ is on the _____.

3.




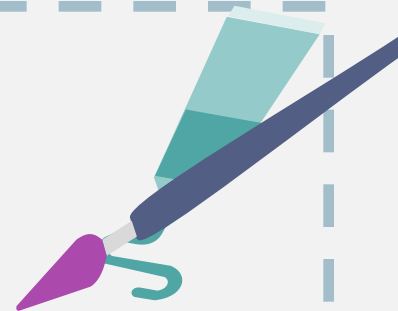
The _____ is near the _____.



三 阅读短文,判断句子正(T)误(F)。

We have a new classroom. It's very nice. You can see two blackboards, a new computer, three purple fans, eight lights, many blue desks and chairs. The windows are orange. The walls are green. The door is yellow. My seat(座位) is near the teacher's desk.





- () 1. Our classroom is new.
- () 2. You can see eight fans and many chairs.
- () 3. The walls are blue.
- () 4. The windows are orange.
- () 5. My seat is near the teacher's desk.

