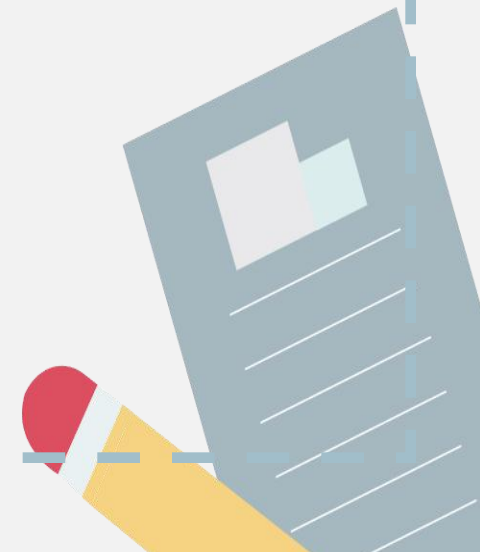
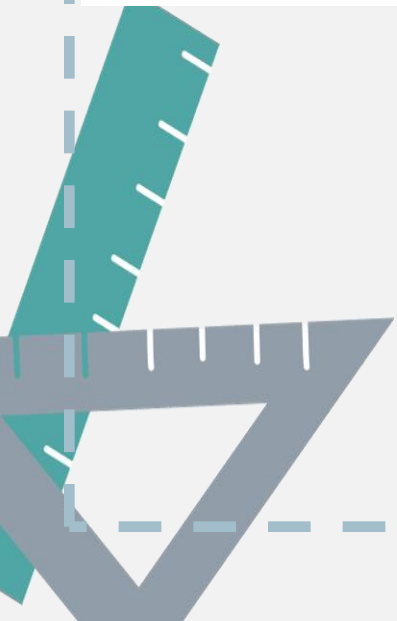




Recycle 1 Writing Part





一 根据汉语提示补全单词。

1. sl _____ (慢的)

2. pl _____ n _____ (飞机)

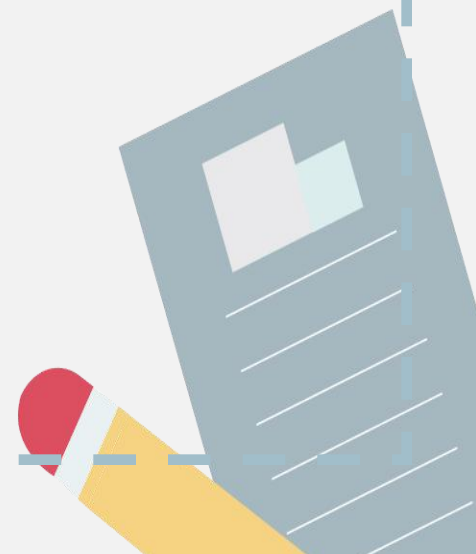
3. cr _____ ss _____ (十字路口)

4. v _____ s _____ † (拜访)



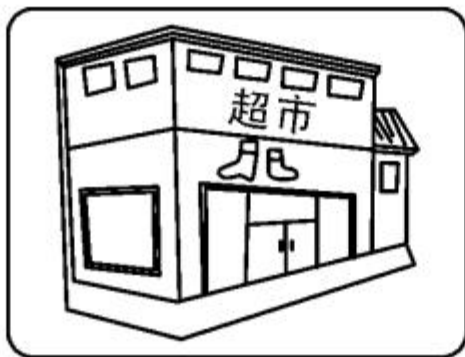
5. t _____ n _____ (在今晚)

6. b _____ kst _____ (书店)



二 给下列图片选择正确的短语。

() 1.



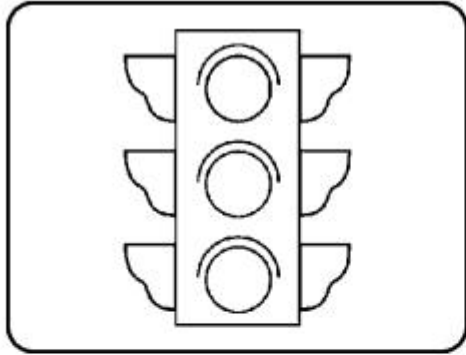
A. word book

() 2.



B. go to the
supermarket

() 3.



C. go straight

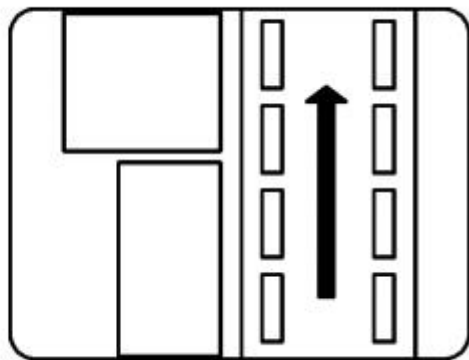
() 4.



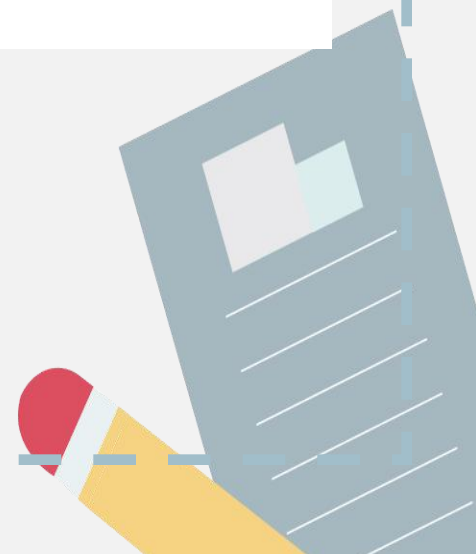
D. by taxi



() 5.



E. traffic lights





三 选择正确的答案。

() 1. _____ there a gym near here?

A. **Is**

B. **Are**

C. **is**



()2. — _____ the post office?

—It's behind the library.

A. Where

B. Where's

C. What's

() 3. _____ the No.312 bus over there.

A. Go

B. By

C. Take

() 4. I must _____ the traffic lights.

A. pay attention

B. attention to

C. pay attention to



()5. — _____ are you going?

— Next Thursday.

A. When

B. What

C. Where

四 选词填空。(可重复使用)

at to about of on

1. We're in front _____ the Italian restaurant.
2. Turn left _____ the nature park.
3. The cinema is next _____ the gym _____
Xinhua Street.



4. Stop and wait _____ a red light.

5. This book is _____ space travel.



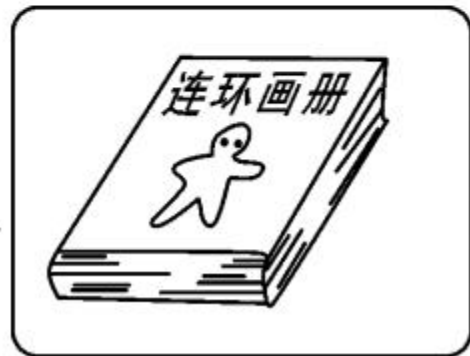
五 看图,完成下列句子。

1. I often go to work _____
_____.

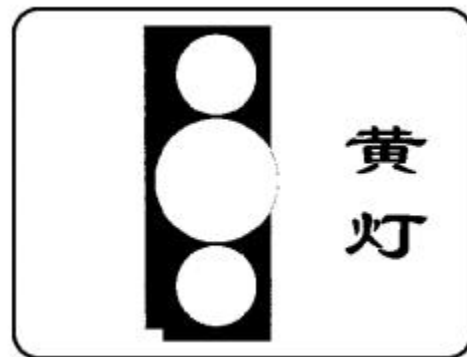


2. — What are you going to buy?

— I'm going to buy a _____



3. It's yellow now. Please _____
_____ and _____.



4. — What are you going to do on
the weekend?

— I'm going to _____
_____.



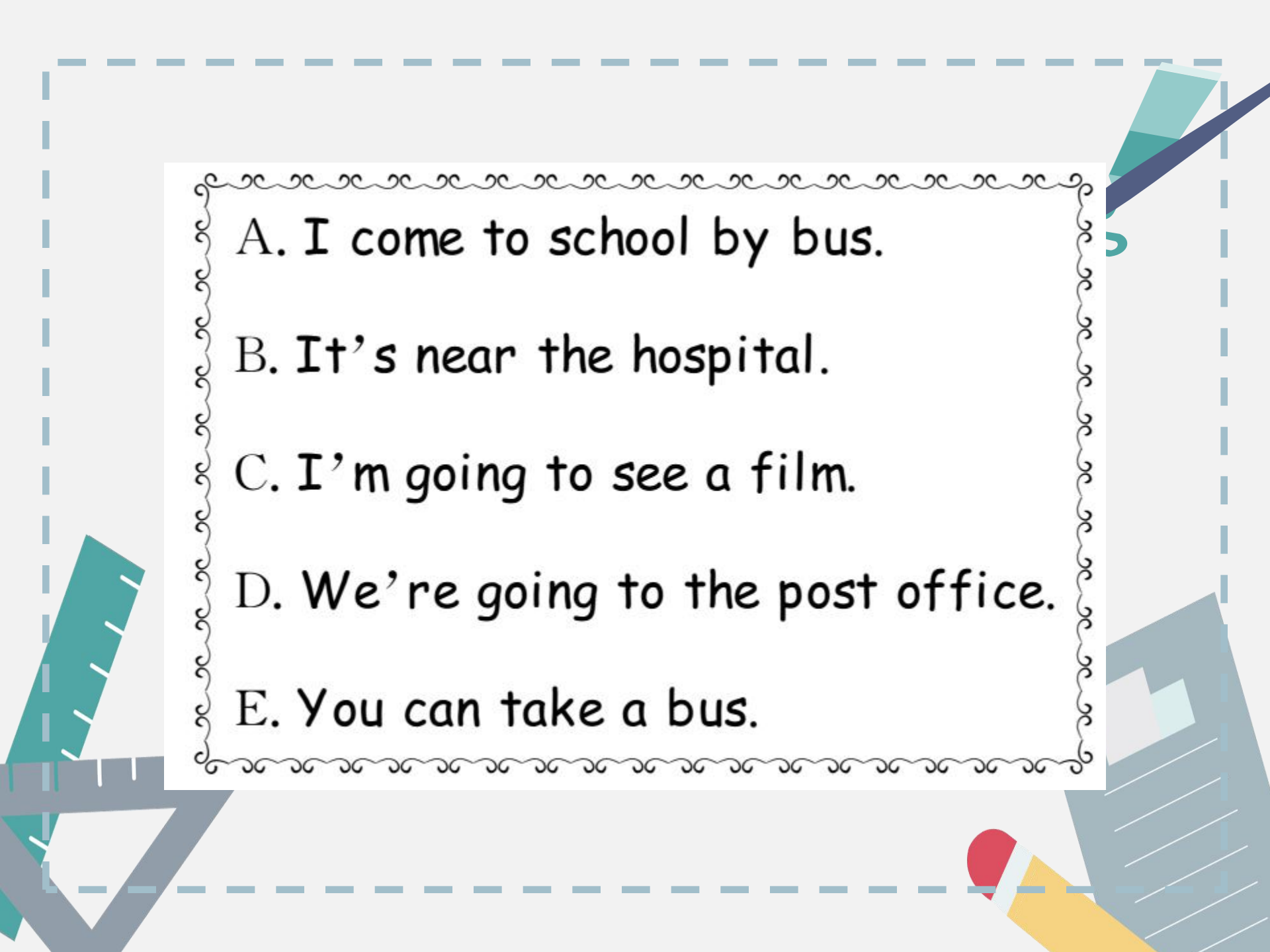
5. — How can I get to the Youyi
Hospital?

— _____ at the
library.



六 读问句,选答句。

- () 1. How can we get there?
- () 2. What are you going to do?
- () 3. Where's the bookstore?
- () 4. How do you come to school?
- () 5. Where are you going?

- 
- A. I come to school by bus.
- B. It's near the hospital.
- C. I'm going to see a film.
- D. We're going to the post office.
- E. You can take a bus.



七 连词成句。

1. don't at light go red the (!)

2. interesting an what film (!)

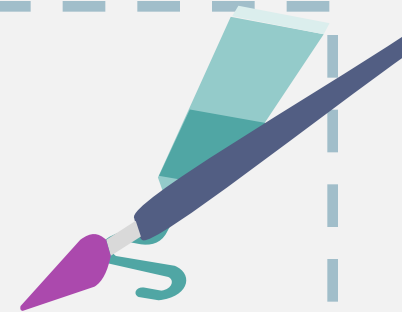




3. we get how the do to science

museum (?)

4. father to watch TV my is going (?)



5. have clothes I to wash (.)



八 猜谜语，将答案的序号写在括号里。

A. dictionary


B. postcard

C. Thursday

D. cinema

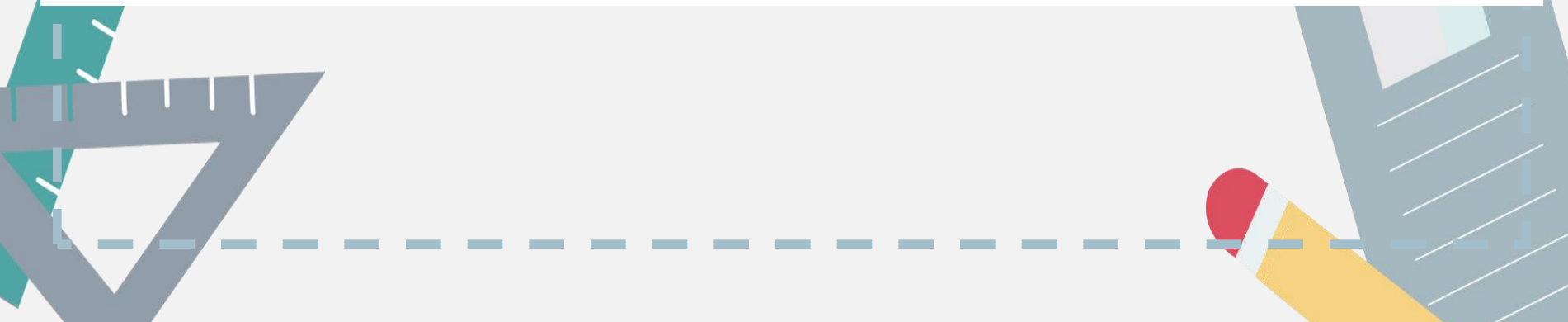
() 1. This day is before Friday.

() 2. You can see a film there.



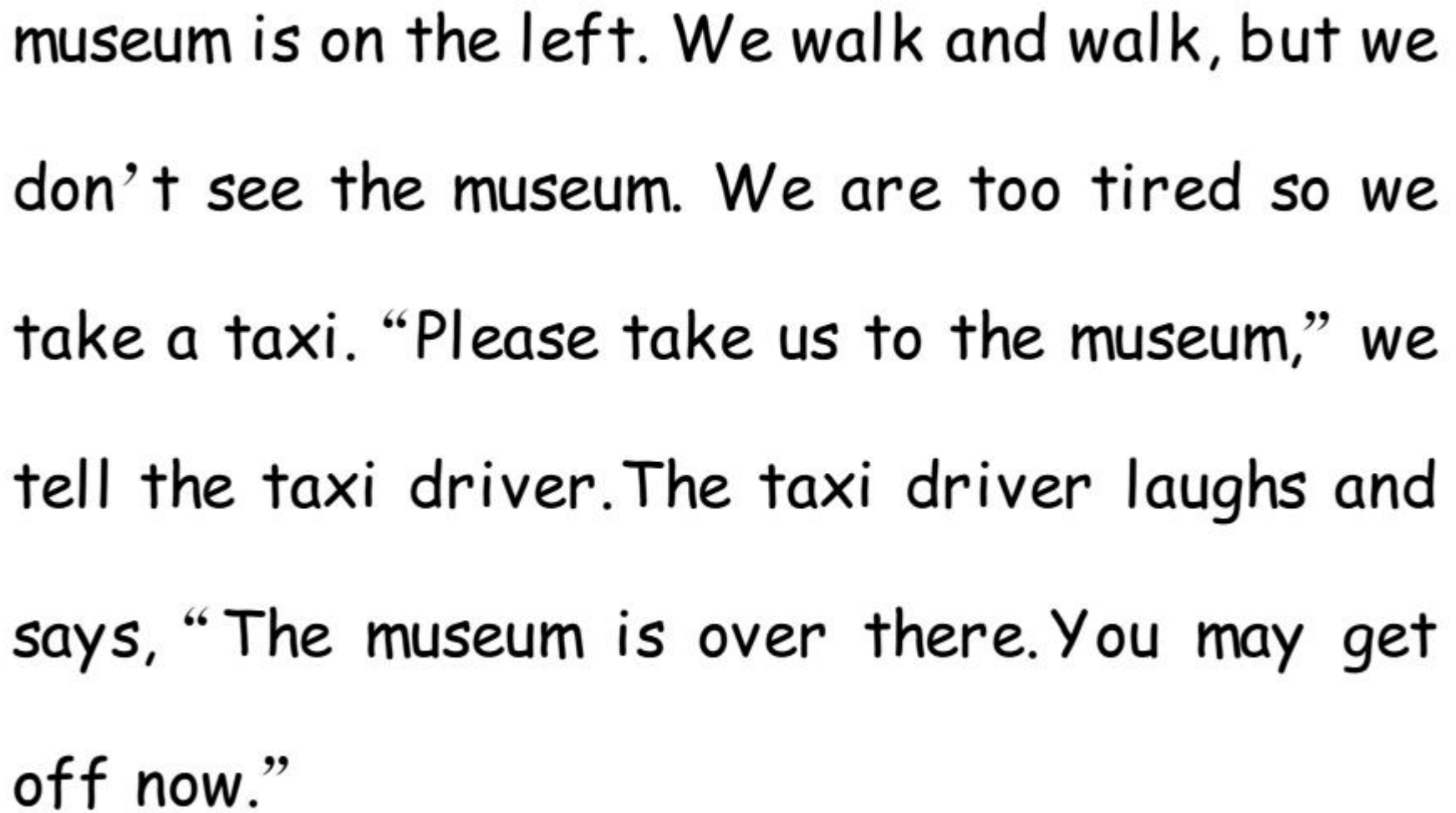
()3. It can tell you a new word's meaning
(意思).

()4. I can write a short message(信息) on
the card and send it to friends.



九 阅读短文,判断下列句子的正(T)误(F)。

It's Sunday today. John and I go to a park. Then we want to go to the science museum but we don't know the way. We ask a man in the park for help. He tells us to go straight along Jiefang Road, then turn right. The science



museum is on the left. We walk and walk, but we don't see the museum. We are too tired so we take a taxi. "Please take us to the museum," we tell the taxi driver. The taxi driver laughs and says, "The museum is over there. You may get off now."

- () 1. John and I go to a park on Saturday.
- () 2. We also want to go to the bookstore.
- () 3. The man in the park tells us the way to
the science museum.
- () 4. We go to the science museum by bike.
- () 5. The taxi driver doesn't know the way
to the science museum.