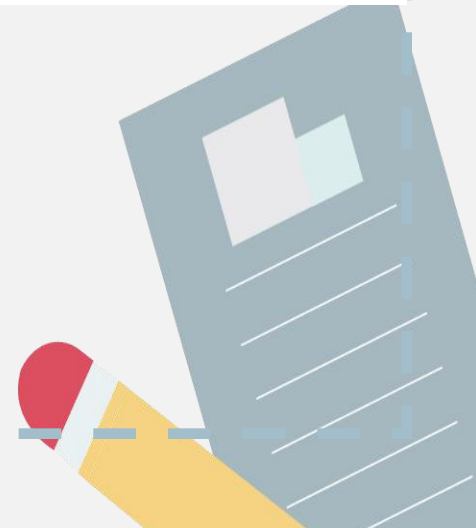


Part A (II)

Let's learn Make a map and talk



一 把图片、单词和汉语意思相配,连线。

1.



2.



3.



4.



5.



A. post office

B. hospital

C. science
museum

D. cinema

E. bookstore

a. 医院

b. 书店

c. 邮局

d. 科学博
物馆

e. 电影院



二 选择不同类的一项。

()1. A. near

B. cinema

C. next to

()2. A. where

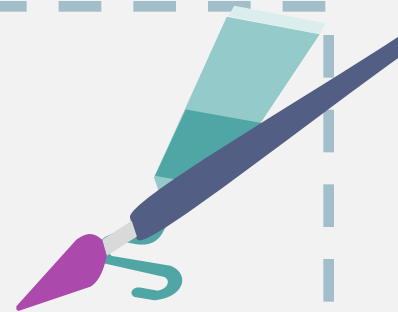
B. what

C. white

()3. A. bookstore

B. hospital

C. pet



() 4. A. postcard

B. post office

C. museum

() 5. A. science

B. city

C. English



三 他们要去哪儿？请用英语写出来。

1. John wants to buy a storybook.

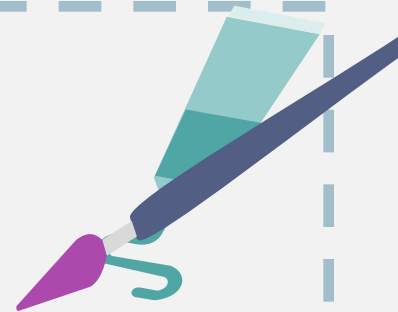
He will go to the _____.

2. Sarah's dog is ill (生病的).

She will take it to the pet _____.

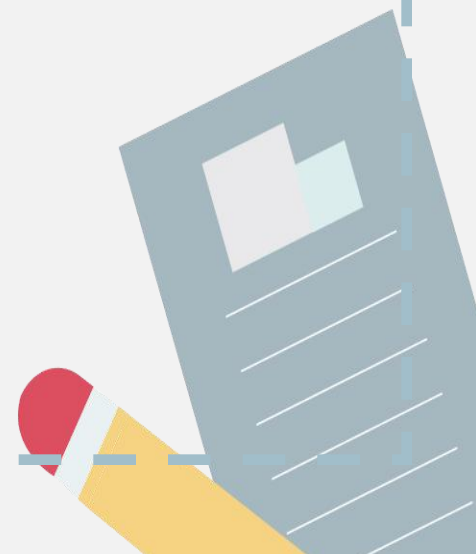
3. Oliver wants to see a film (电影).

He will go to the _____.



4. Zhang peng is going to send a postcard.

He'll go to the _____.



四 选择正确的答案。

() 1. The library is next _____ the bookstore.

A. at

B. in

C. to

() 2. Where is the _____? I want to buy some books.

A. bookstore

B. cinema

C. hospital



() 3. There _____ a science museum in my city.

A. am

B. is

C. are

() 4. Where is _____ ?

A. they

B. it

C. I



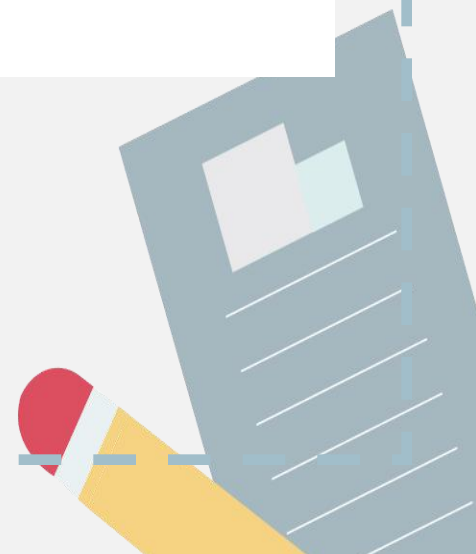
() 5. — Is there a park near here?

— _____

A. Yes, it is.

B. No, there is.

C. Yes, there is.



五 按要求完成下列各题。

1. It's next to the cinema. (改为一般疑问句)

2. 书店在哪儿? (汉译英)

3. The museum is behind the bookstore. (对画线部分提问)



六 根据所给的街区图判断正(T)误(F)。

pet hospital

bookstore

park

zoo

cinema

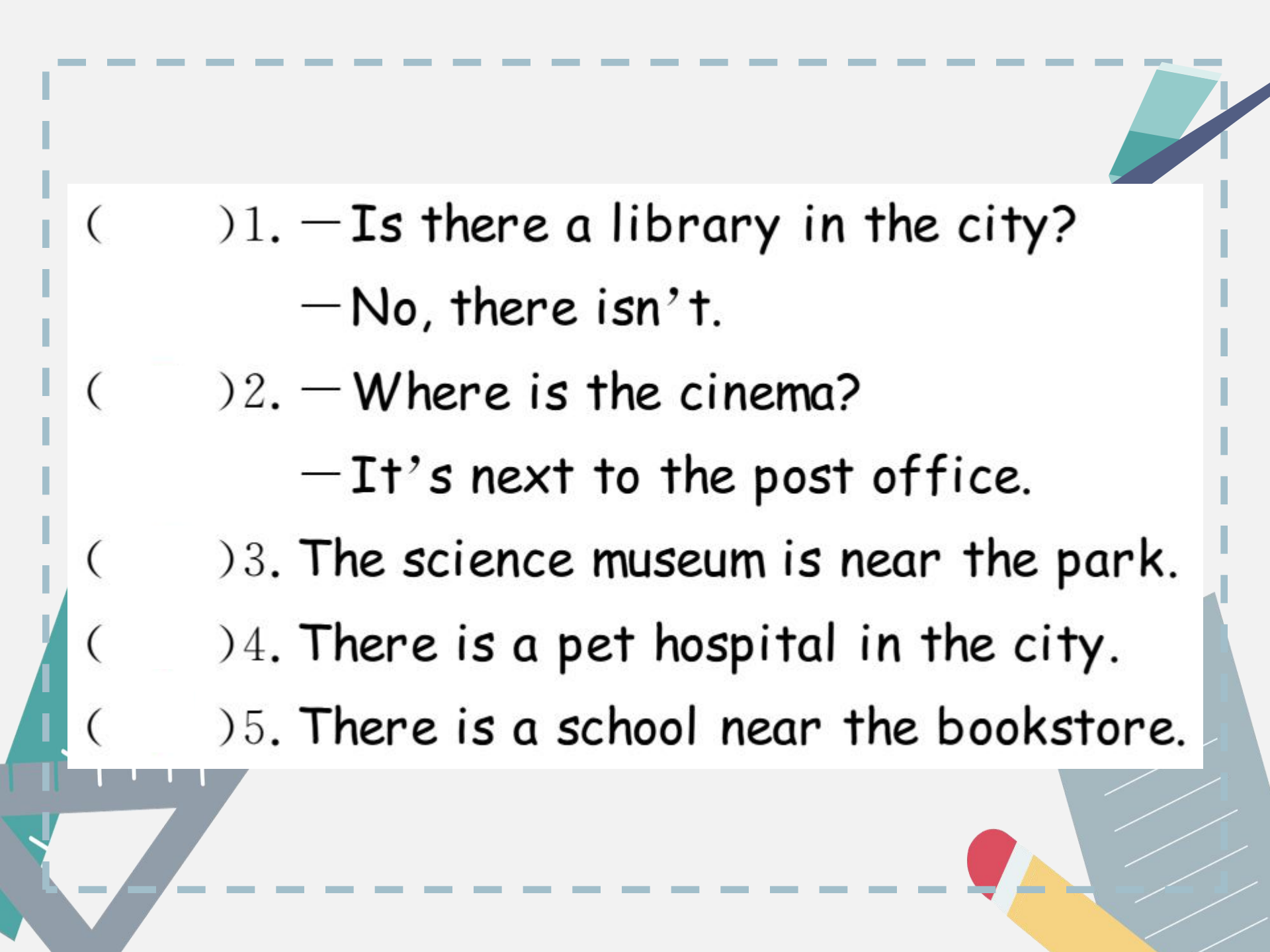
post office

school

library

science
museum





() 1. — Is there a library in the city?

— No, there isn't.

() 2. — Where is the cinema?

— It's next to the post office.

() 3. The science museum is near the park.

() 4. There is a pet hospital in the city.

() 5. There is a school near the bookstore.